

Special Combination Buffer/ Abrasive Belt Swingframe Grinder

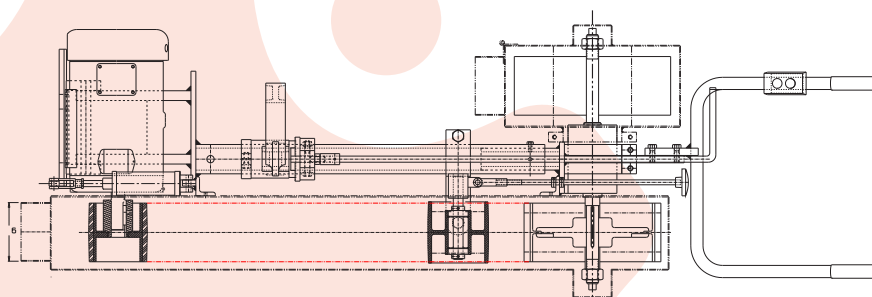
BULLETIN SBC/ASG

Model: S-7677-E (as shown in the photos) with the belt on the left hand side and buff on the right

Model: S-7677-E-OH – opposite hand with the belt on the right hand side and buff on the left

Both Models:

- 15 Horsepower
- 6 x 132 abrasive belt on either left or right hand side of the machine, abrasive belt speed is 5,500 sfpm
- 14" x 6" wide serrated contact wheel
- 16" diameter x 6" wide (maximum) x 1 1/4" bore buffing wheel at approx.. 1540 RPM
- Suspension bar to hand grinder
- Adjustable swivel that can be locked into place



G&P Machinery Model: S-76770-E



GRINDING & POLISHING MACHINERY CORPORATION

2801 TOBEY DRIVE / INDIANAPOLIS, IN 46219

PHONE (317) 898-0750 • FAX (317) 899-1627