

# OPERATING AND MAINTENANCE INSTRUCTIONS

**FOR MODELS: B290-5, B390-5, B490-5  
B290-7, B390-7, B490-7**

## SPECIFICATIONS - BASIC UNIT

Motor: 5 or 7½ H.P., 3450 RPM, TEFC, 184T Frame. Rated for continuous service.

Starter: IEC Magnetic Push Button with overload protection.

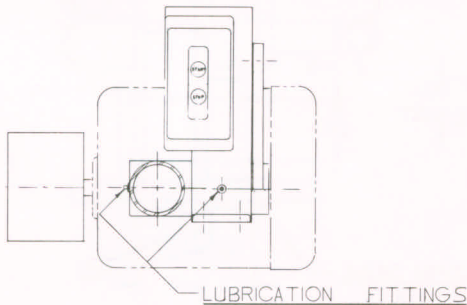
Motor Pulley: 6" dia. x 4-1/4" width (2 degree crown).

Abrasive Belt Size: 2" – 3" or 4" wide x 90" long – Width dependent on model.

Contact Wheel: 8" dia. x 2" face – 3" face or 4" face – Serrated Face.

## CAUTION

Be sure all guards are in place with the door closed when operating this equipment. Always wear eye protection. When using as a swing grinder, the operator must have a clear level area on which to stand, and the operator's hands should be kept on the handle bars of the grinder when operated as a swing grinder. Failure to heed this warning may result in serious injury.



## LUBRICATION

All ball bearings (motor and contact wheel) are sealed-for-life.

Two Alemite fittings . . . one on the swivel casting and one on the swing casting . . . require periodic lubrication with a good grade of grease as use dictates, or at least once every three months.

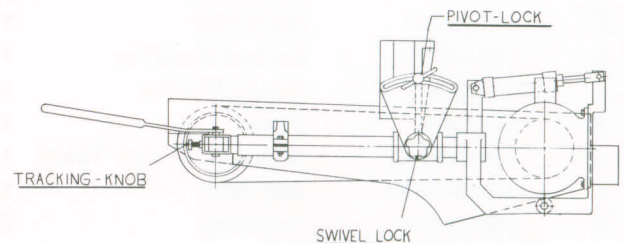
## ADJUSTMENTS

The belt tracking knob provides a threaded lateral pivoting adjustment of the contact wheel shaft for centering or tracking the abrasive belt on the contact wheel.

The pivot lock controls the pivot adjustment . . . to move the contact wheel up or down. It can be locked at any point in the arc of travel.

The swivel lock controls the swivel adjustment . . . to tip the contact wheel radially to left or right. This too can be locked at any point.

The pivot lock and swivel lock can be used independently . . . or in combination.



## BELT TENSIONING

Tensioning of the abrasive belt is accomplished by the use of an air cylinder and hand valve. The amount of tensioning can be adjusted by increasing the amount of air pressure shown on the regulator gauge. The normal setting is around 30 psi.

To change the Contact Wheel Tire . . . remove the screws holding the outer flange, remove the flange, then remove the old tire and install the new tire. Be sure the rim of the new tire is on the pilot or shoulder of inside hub before replacing outer flange.

**GRINDING & POLISHING MACHINERY CORPORATION**

2801 TOBEY DRIVE/INDIANAPOLIS, IND. 46219

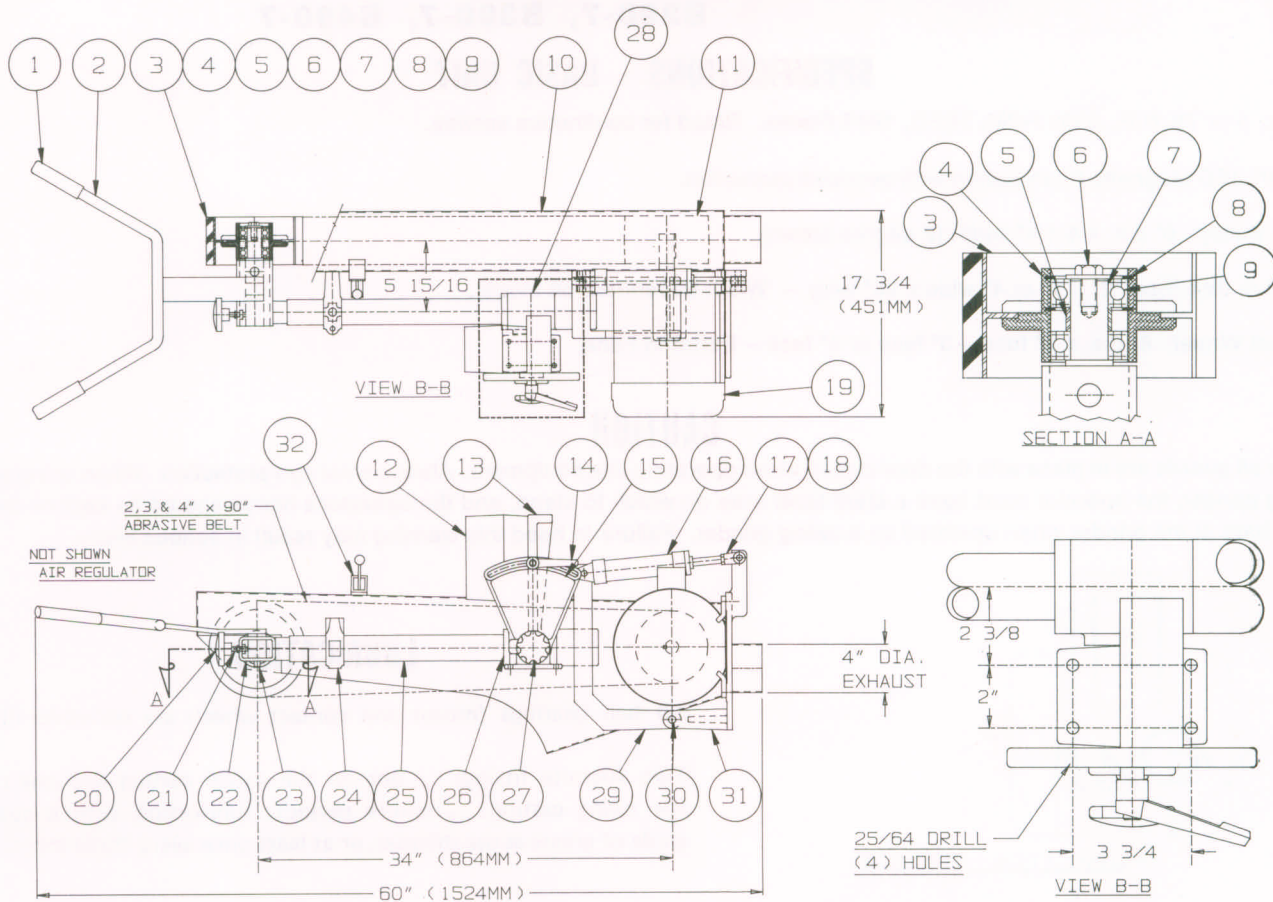
PHONE (317) 898-0750 FAX (317) 899-1627

**GP**  
MACHINERY

Printed in U.S.A.

# PARTS LIST FOR

## MODELS — B290-5, B390-5, B490-5 B290-7, B390-7, B490-7



ITEM NUMBER	PART NUMBER	DESCRIPTION	QUAN.	ITEM NUMBER	PART NUMBER	DESCRIPTION	QUAN.
1	143 R	Handle Grip	2	17	7/16 - 20	Rod Clevis	1
2	M-10509-D	Handle Bar	1	18	1/2"	Clevis Pin	1
3	* R54 - 8" Dia.	Contact Wheel Tire	1	19	Motor	5 or 7 1/2 HP	1
4	M-10538-D	Hub for R54 Tire	1	20	M-10536-D-1	Tracking Knob	1
5	M-9726-B	Spacer	1	21	343-B	Spring	1
6	DIN 6340-13	Washer & 1/2-13x1" HHCS	1	22	M-11376-D	Front End	1
7	M-10513-C-1	Stub Shaft	1	23	M-11480-B-1	Pin	1
8	N5000-244	Snap Ring	2	24	718-C	Support Casting	1
9	W206PP	Bearing	2	25	M-11378-C	Tubular Member	1
10	M-11377-E	Enclosed Guard	1	26	736-B-1	Collar	1
11	M-10788-C1	6" Drive Pulley	1	27	M-10536-D-2	Swivel Lock	1
12	109 IEC	Motor Switch	1	28	M-10508-D	Pivot Casting	1
13	M-10881-E	Swing Casting	1	29	M-11374-E	Motor Pivot Bracket	1
14	38051	Pivot Lock Handle	1	30	M-11480-B-2	Pin	1
15	M-10507-D	Pivot Lock	1	31	M-11375-E	Motor Mounting Bracket	1
16	MP2-1 1/2 x 4	Air Cylinder	1	32		4 Way Valve	1

\* Specify Width & Durometer

**GRINDING & POLISHING MACHINERY CORPORATION**

2801 TOBEY DRIVE/INDIANAPOLIS, IND. 46219  
PHONE (317) 898-0750 FAX (317) 899-1627

Printed in U.S.A.



**MACHINERY**