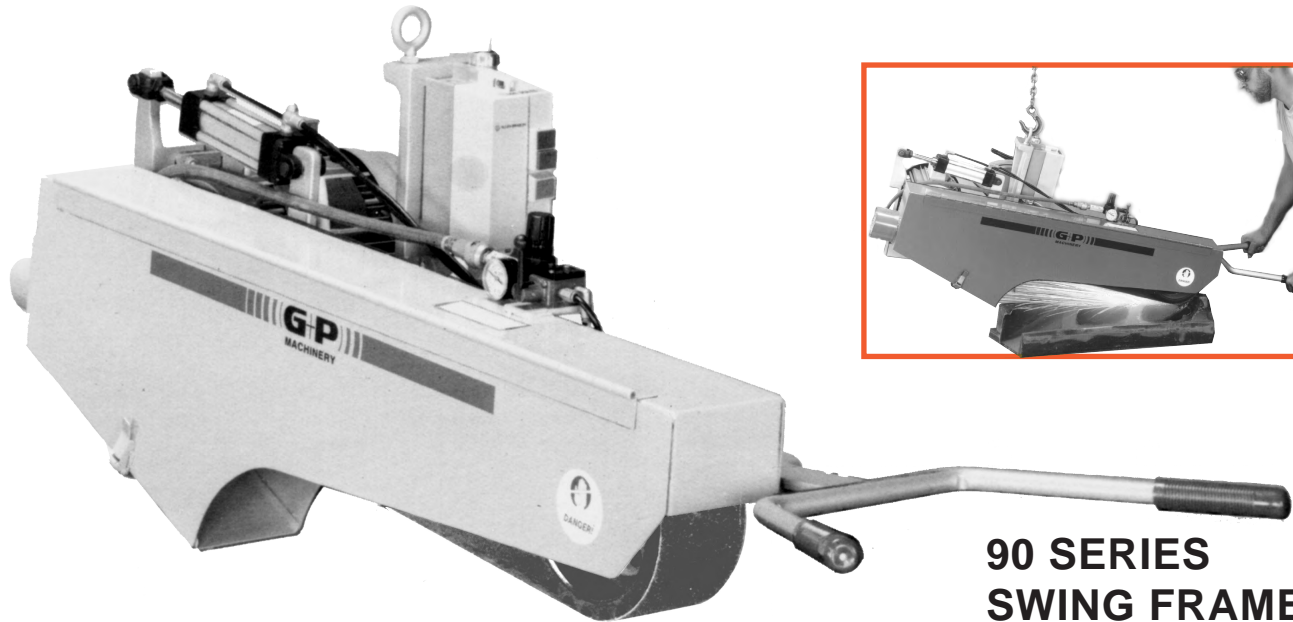
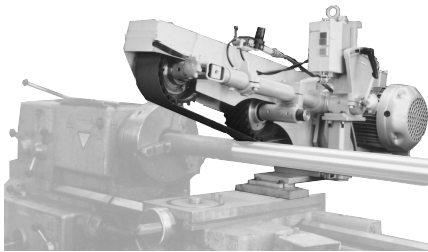


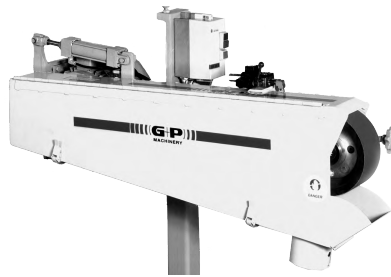
ABRASIVE BELT GRINDERS



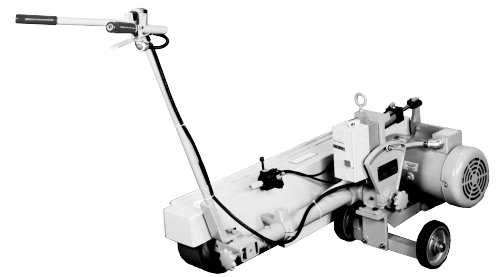
**90 SERIES
SWING FRAME**
90" Belt, 5 or 7.5 HP



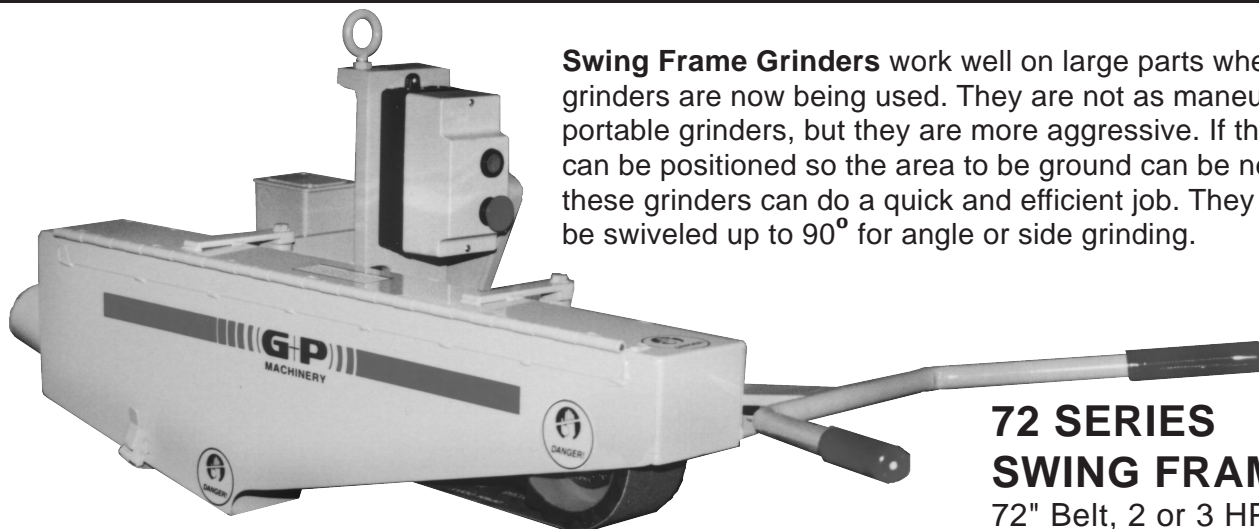
Lathe Mounted



Pedestal Mounted



Carriage Mounted



Swing Frame Grinders work well on large parts where portable grinders are now being used. They are not as maneuverable as portable grinders, but they are more aggressive. If the work piece can be positioned so the area to be ground can be near the top, these grinders can do a quick and efficient job. They can also be swiveled up to 90° for angle or side grinding.

**72 SERIES
SWING FRAME**
72" Belt, 2 or 3 HP



MACHINERY

GRINDING & POLISHING MACHINERY CORPORATION
2801 TOBEY DRIVE • INDIANAPOLIS, IN 46219-1481
PHONE (317) 898-0750 FAX (317) 899-1627

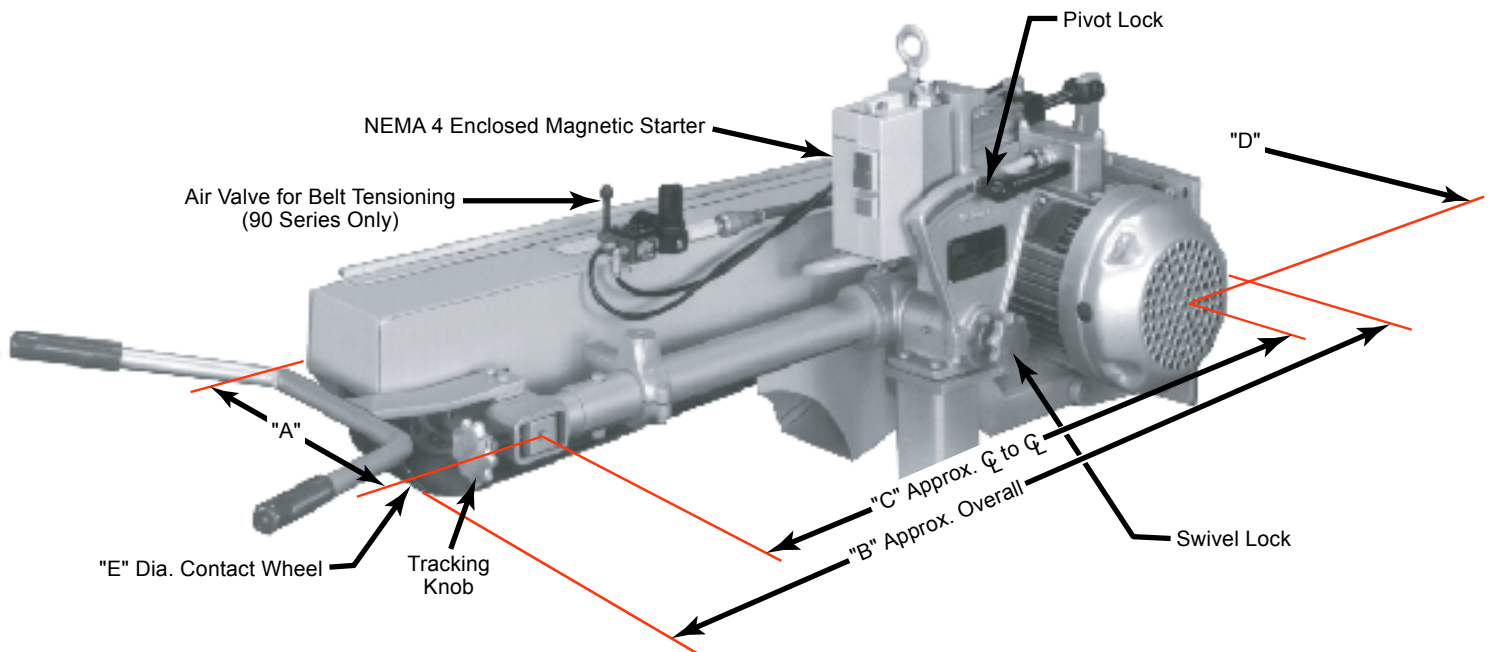
www.gandpmachinery.com

The **72 Series Grinders** are equipped with a 2 or 3 horsepower motor 208-230-460 volt, 3 phase, 60 hertz motor. The abrasive belt size is 2", 2.5" or 3" wide x 72" long as indicated by the chart.

| Model | Belt Size | Motor |
|----------|------------|-------|
| B-272-2 | 2" x 72" | 2 hp |
| B-2572-2 | 2.5" x 72" | 2 hp |
| B-372-2 | 3" x 72" | 2 hp |
| B-272-3 | 2" x 72" | 3 hp |
| B-2572-3 | 2.5" x 72" | 3 hp |
| B-372-3 | 3" x 72" | 3 hp |

The **90 Series Grinders** are equipped with a 5 or 7.5 horsepower motor 208-230-460 volt, 3 phase, 60 hertz motor. The abrasive belt size is 2", 3" or 4" wide x 90" long as indicated by the chart.

| Model | Belt Size | Motor |
|---------|-----------|--------|
| B-290-5 | 2" x 90" | 5 hp |
| B-390-5 | 3" x 90" | 5 hp |
| B-490-5 | 4" x 90" | 5 hp |
| B-290-7 | 2" x 90" | 7.5 hp |
| B-390-7 | 3" x 90" | 7.5 hp |
| B-490-7 | 4" x 90" | 7.5 hp |



| Dim | A | B | C | D | E | Belt Tensioning |
|-----------|----|-----|-----|-----|----|-----------------|
| 72 Series | 9" | 35" | 27" | 15" | 6" | Spring |
| 90 Series | 9" | 44" | 34" | 18" | 8" | Pneumatic |

Accessories:

As shown on the front side, these grinders can be converted from swing frame grinders to lathe grinders, pedestal grinders, and plate/weld grinders with the proper accessories. The third wheel attachment can be used as a contact wheel or slack of belt polisher. Consult factory for additional information.

Contact Wheels:

The proper contact wheel is an important factor in any grinding application.

- 90 durometer serrated face for rapid stock removal.
- 70 durometer serrated face for general purpose grinding.
- 50 durometer serrated face for moderate stock removal and polishing.