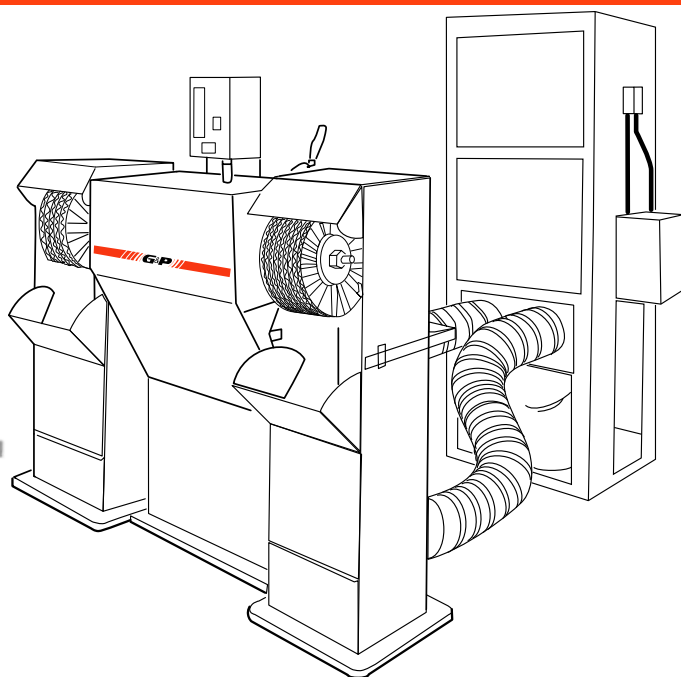
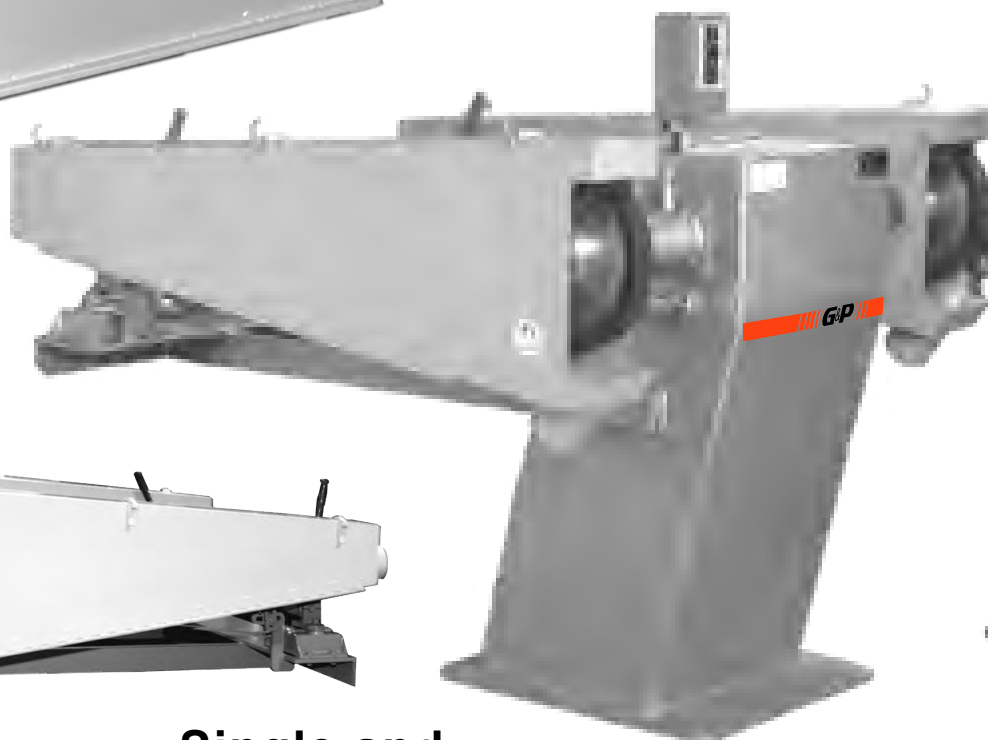


GRINDING-POLISHING-BUFFING LATHES

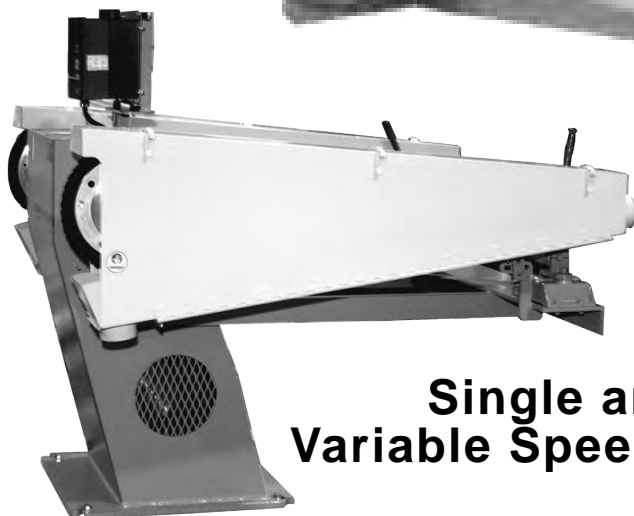
Single Motor Polishers and Buffers



Dual Motors for Polishing and/or Buffing



Single and Variable Speeds



GRINDING & POLISHING MACHINERY CORPORATION
2801 TOBEY DRIVE INDIANAPOLIS, IN 46219-1481
PHONE (317) 898-0750 FAX (317) 899-1627

MACHINERY
www.gandpmachinery.com

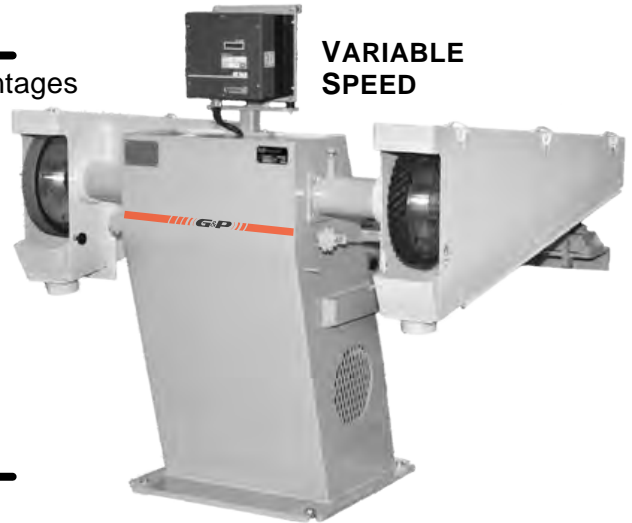
OPTIONAL CONTACT WHEEL and BELT ATTACHMENT

CONTACT WHEEL AND BELT ATTACHMENT

This accessory, as shown in the picture at the right offers advantages over the typical method of mounting the idlers on the floor.

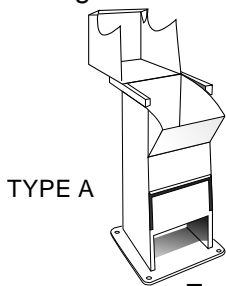
Because the contact wheel, backstand idlers and guards are all mounted to a support frame that is secured to the base of the machine, it is possible to move or relocate the lathe without remounting or realigning the idlers. The **Contact Wheel and Belt Attachment** can only be supplied if ordered at the same time as the polishing lathe.

Available with Spring Tensioned idlers or Air Tensioned idlers. The Air Tensioned idlers are recommended for belt speeds of 7500 SFPM and faster due to larger diameter pulleys.



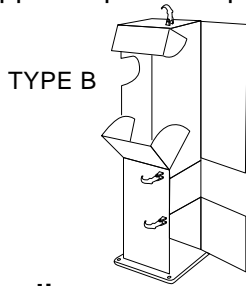
GUARDS-

All polishing and sanding wheels must be guarded to protect the operator. Operating without guards may lead to serious injury. This is stated in a warning sign attached to every machine. G&P offers guards as listed below. Prices for guards will be supplied upon receipt of details of the application.



TYPE A

Free Standing

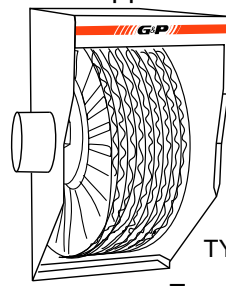


TYPE B

TYPE A - Cover swings clear of the wheel and spindle, providing easy access for wheel changing.

TYPE B - Door swings open for wheel access.

Both have adjustable scoop, clean out door and exhaust outlet for connection to dust collector.



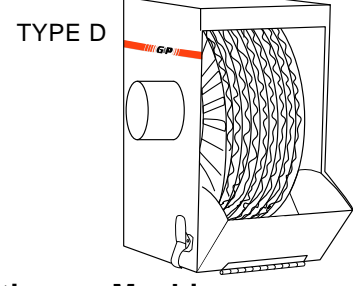
TYPE C

For Mounting on Machine

TYPE C - Open bottom to allow clearance when sanding or buffing long parts off-hand.

TYPE D - Closed bottom with adjustable scoop for improved dust collection.

Both have a hinged door and an exhaust outlet for connection to dust collector.

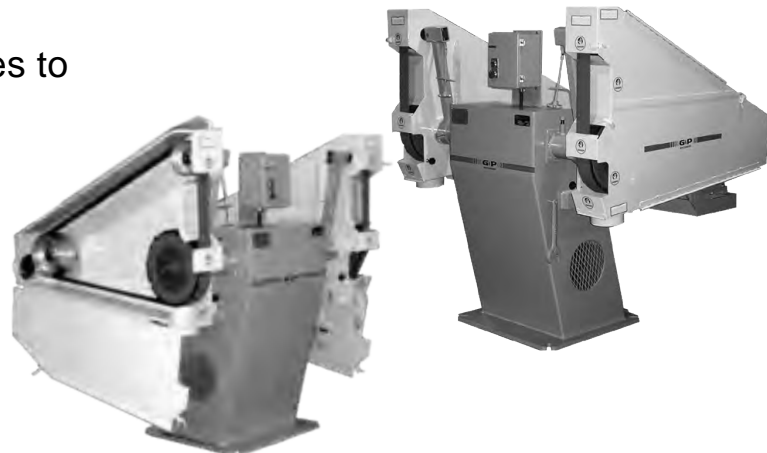


TYPE D

SPECIAL GUARDS AND ACCESSORIES AVAILABLE ON REQUEST

G&P is happy to quote modified accessories to meet your specific requirements.

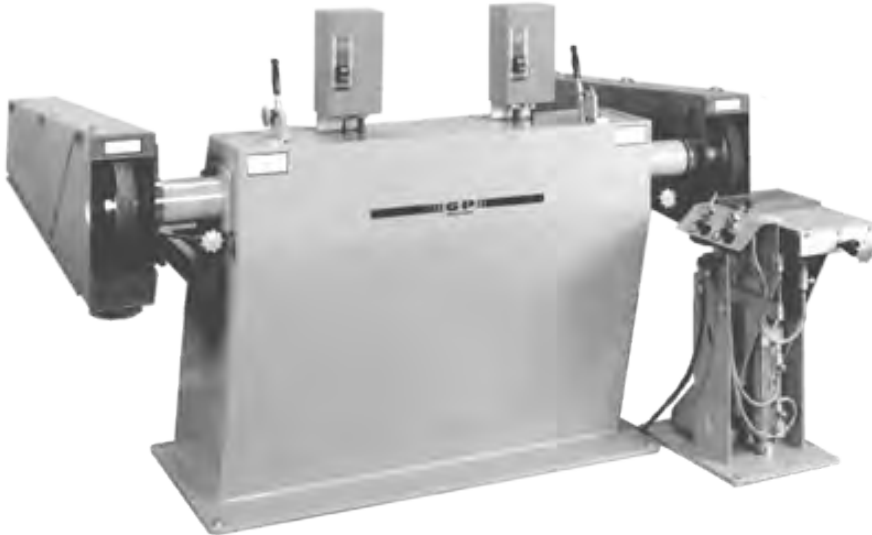
The photographs to the right show a machine with a special contact wheel and belt attachment providing a slack-of-belt polishing area in addition to the contact wheel.



HEAVY DUTY VARIABLE AND SINGLE SPEED 15 AND 20 HORSEPOWER

SINGLE MOTOR OR DUAL MOTOR MODELS AVAILABLE

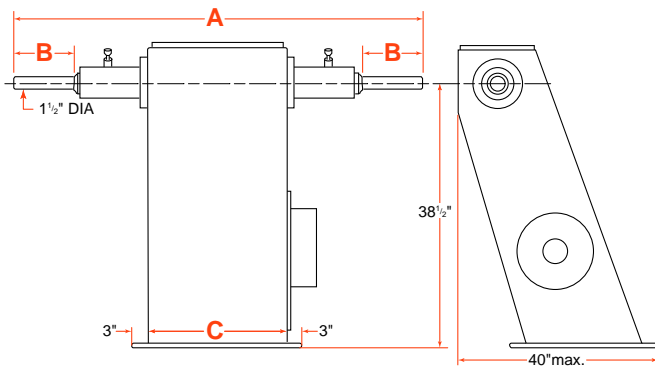
The VSH and SSH Series picks up in ruggedness where the others leave off with higher horsepower, 1 1/2" diameter spindles, a heavier base, and standard spindle brake.



MODEL 2MSSH SHOWN WITH BELT ATTACHMENTS
AND A GA-10 PRESSURE ASSIST TABLE

Standard Features:

- Combination brake and stop switch that can be locked in position.
- Heavy duty fabricated steel base.
- LCD on VHS models.
- Full voltage push button starters in NEMA 12 enclosures.
- 1 1/2" x 6" long spindles.



MODEL	H.P.	RPM	A	B	C
VHS-1500	15	800-2400	63"	6"	29 1/2"
VHS-2000	20	800-2400	63"	6"	29 1/2"
SSH-1500	15	1800	63"	6"	29 1/2"
SSH-2000	20	1800	63"	6"	29 1/2"
2MVSH-1500	(2) 15	800-2400	91"	6"	57 1/2"
2MVSH-2000	(2) 20	800-2400	91"	6"	57 1/2"
2MSSH-1500	(2) 15	1800	91"	6"	57 1/2"
2MSSH-2000	(2) 20	1800	91"	6"	57 1/2"



MODEL SSH SHOWN WITH BELT
ATTACHMENTS AND OPTIONAL TOOL RESTS

- Consult factory for modifications.
- See page 4 for optional belt attachment and guards.

All specifications are subject to change without notice.

VARIABLE SPEED AND SINGLE SPEED 5 - 7 1/2 - 10 HORSEPOWER

SINGLE MOTOR OR DUAL MOTOR MODELS AVAILABLE

The **VS** models are variable speed, the **SS** models are single speed. Variable speed is accomplished with the use of a variable frequency drive.

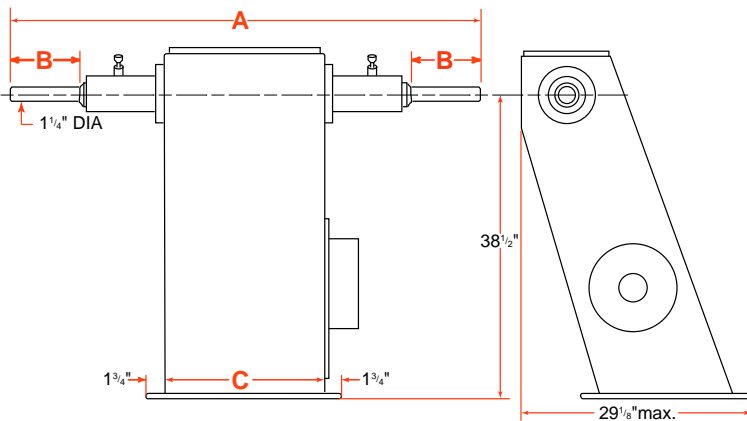
Standard Features:

- LCD on the VS models.
- Heavy duty fabricated steel base.
- Spindle lock on each side (spindle brake optional).
- Full voltage push button starters in NEMA 12 enclosures.
- 1 1/4" x 6" or 11" long spindles.



MODEL 2MVS SHOWN WITH GUARDS
GUARDS ARE PRICED SEPARATELY

These models are most often used for off hand grinding and buffing applications using abrasive belts or buffing wheels. Specify long or short spindles when ordering.



MODEL	H.P.	RPM	A	B	C
VS500	5	850-2200	66 5/8" long 56 5/8" short	11" long 6" short	24"
VS700	7 1/2	800-2400	56 5/8"	6"	24"
VS1000	10	800-2400	56 5/8"	6"	24"
SS500	5	1800	66 5/8" long 56 5/8" short	11" long 6" short	24"
SS700	7 1/2	1800	56 5/8"	6"	24"
SS1000	10	1800	56 5/8"	6"	24"
2MVS500	(2) 5	850-2200	90 5/8" long 80 5/8" short	11" long 6" short	48"
2MVS700	(2) 7 1/2	800-2400	80 5/8"	6"	48"
2MVS1000	(2) 10	800-2400	80 5/8"	6"	48"
2MSS500	(2) 5	1800	90 5/8" long 80 5/8" short	11" long 6" short	48"
2MSS700	(2) 7 1/2	1800	80 5/8"	6"	48"
2MSS1000	(2) 10	1800	80 5/8"	6"	48"



- See back page for optional belt attachment, guards, or special modifications.